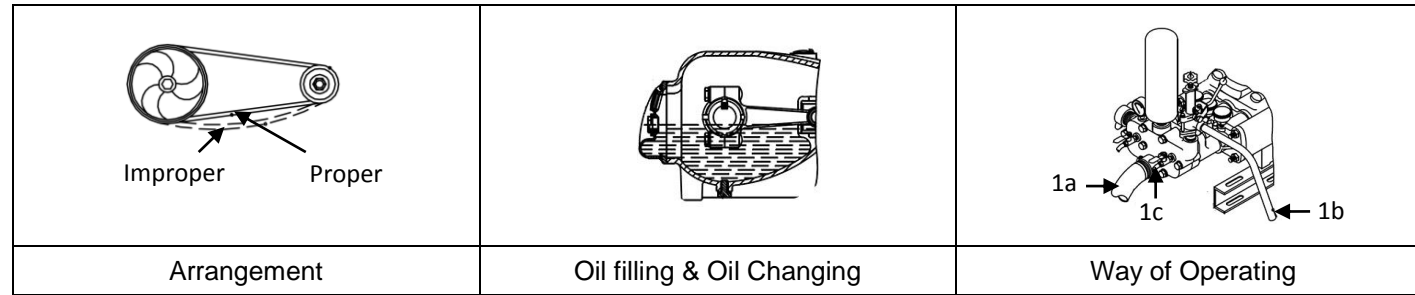


## TS-240 Power Sprayer Manual



### 1. Arrangement

Adjust the belt and pulley in order to make the belt straightly. The V-belt must not be set loosely as to slip away or drop out of its position.

### 2. Oil Filling & Oil Changing

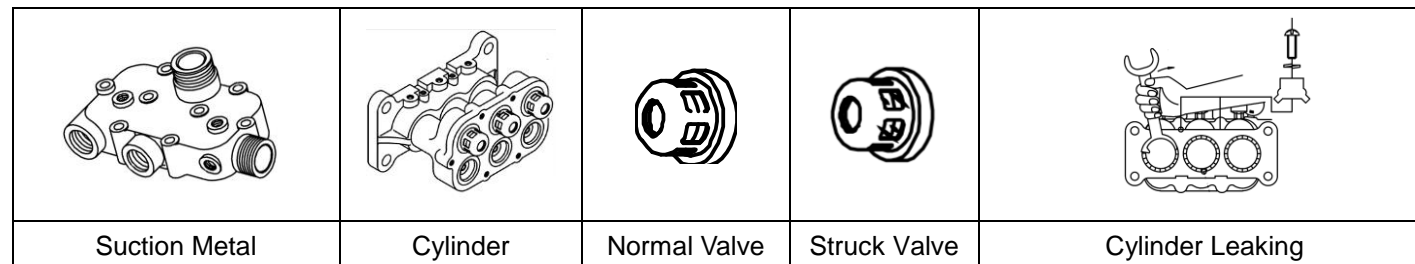
Fill #30 or #40 Oil through the oil hole. Keep the oil level just half of the oil gauge. Change the oil after 50 hours use for the first time and every 100 hours since then. The proper time for changing oil is after operating and the machine is still warm. Remove the drain plug and begin draining.

### 3. Grease Filling

The three grease cups on the cylinder must always be filled with grease. After using for every two hours, wind the grease cups about two circles per time.

### 4. Spray

- a. Fix firmly the suction hose (1a), overflow hose (1b) and spraying hose (1c) on the suction metal, over flow body and cock respectively. Make sure they must be set firmly and let no air leak out.
- b. Operate the power and start the power sprayer.
- c. Turn off the cock.
- d. After the power sprayer is normally operating, adjust the pressure screw. Then turn on the cock and begin operating the power sprayer.



### 5. Trouble Shooting

- a. Feeding failure & pressure instability:
  - Check whether the suction hose is any leaking of air. Tight it up.
  - Check whether the strainer is stuck. Clean it up, if necessary.
  - Turn on the cock for a little while to let out the air left in the feeder and then turn it off.
  - Check whether the suction metal, cylinder and six valves are stuck. Clean it up, if necessary.
  - Check the flat valve and valve seat to see whether they are damaged.
  - Check whether the valve springs are damaged.
- b. Cylinder Leaking:
  - Take the stopper away from the cylinder with screw driver.
  - Remove the plunger cover and wind by the three grands on the cylinder (for 1/3 round ~ 1/2 round). If leaking is still uncontrollable, change the V-packing in the cylinder.
- c. Pressure Falling:
  - Check whether the V-belt is loose.
  - Check whether the spraying hose and coupling packing of spraying hose are broken. Renew the parts if necessary.

### 6. Maintenance

- a. Operate the power sprayer with clean water for about 5minutes after use in order to clean the pesticide left in the machine.
- b. Remove the suction hose, over flow hose, and spraying hose. Then wipe every part of the machine dry.
- c. Check the oil in the crank case. Refill oil, if necessary.
- d. Check whether every screw is set firmly.
- e. Check whether there is any leak of oil.

### 7. Caution

- a. During operation, please don't reach out your hands into space of revolving belt wheel to prevent you from being harmed.
- b. Please check if there is enough oil before operating machine.
- c. Please check if gasoline, diesel oil or cooling water are enough before operating machine.
- d. Please check if contact of electric source and insulation are under good condition before operating machine.
- e. The spraying machine sprayed by pesticide or chemical liquid is prohibited to be used for pumping water to prevent poison.
- f. Please renew pressure gauge if it is damaged in order to maintain machine's safety.
- g. Loosen pressure adjusting screw counterclockwise, after using this machine.

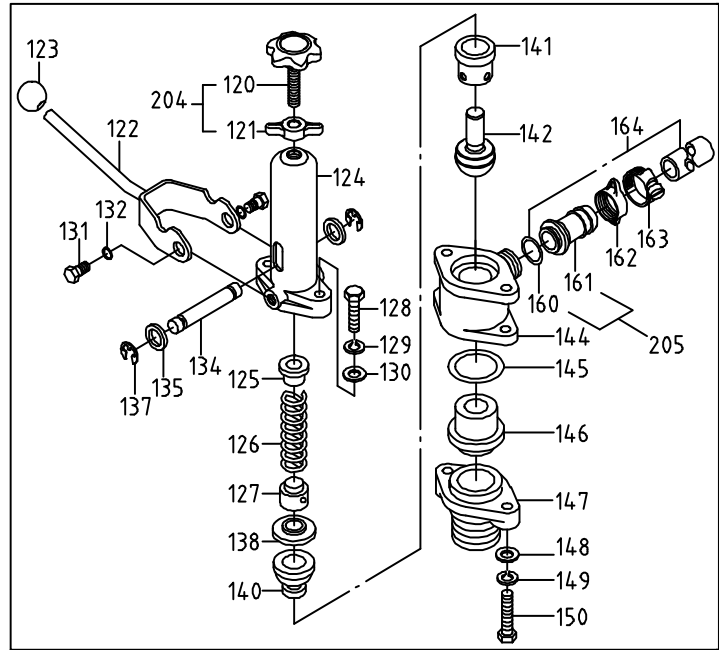
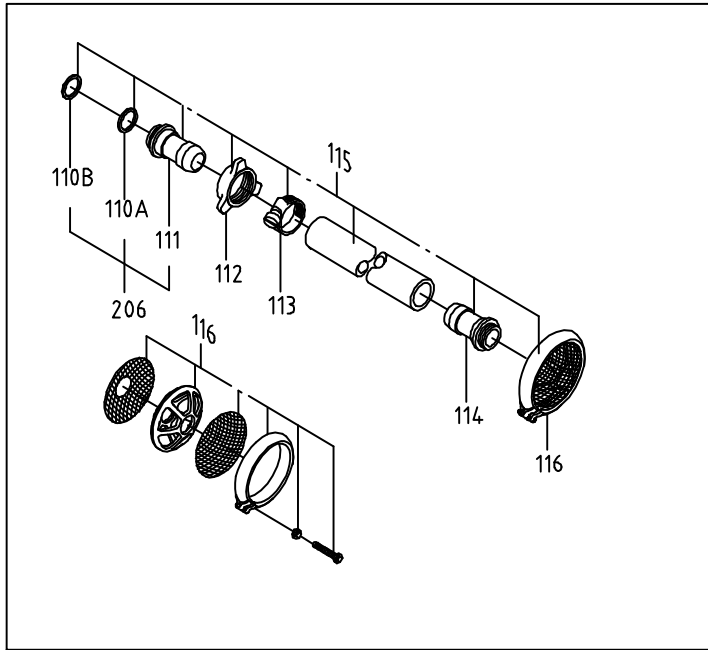
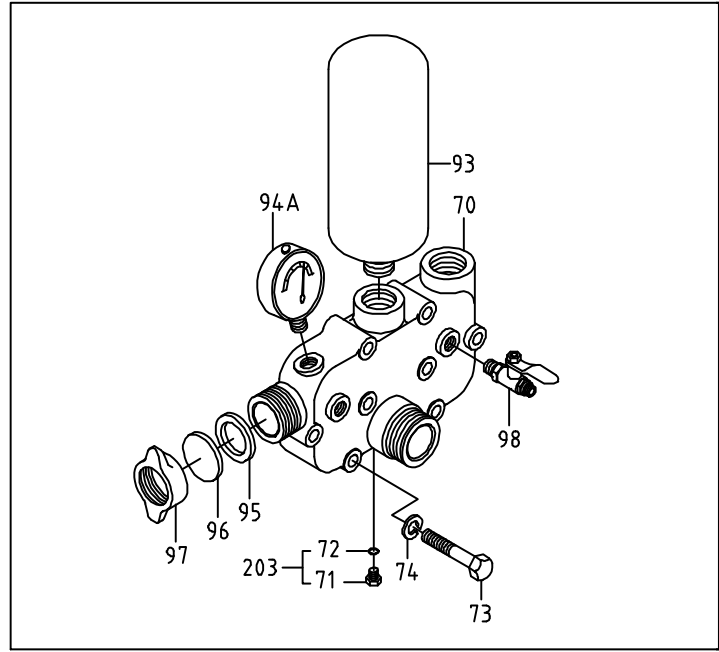
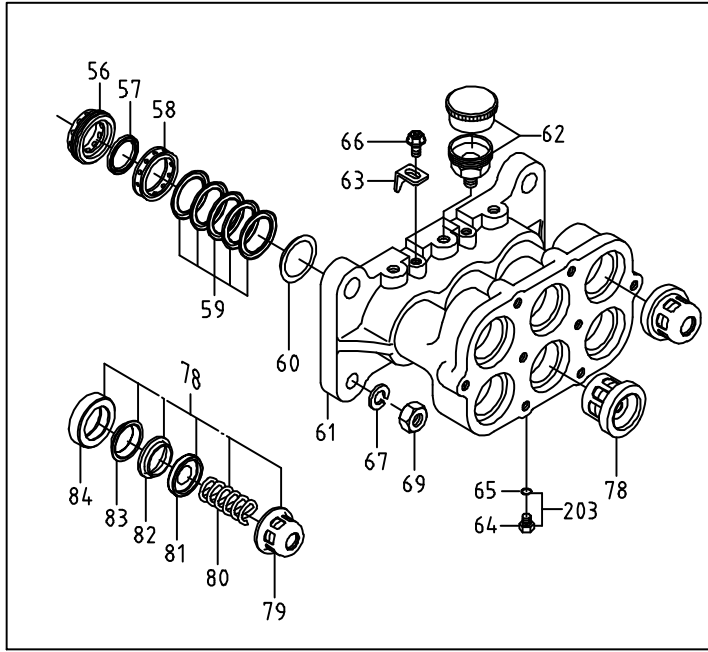
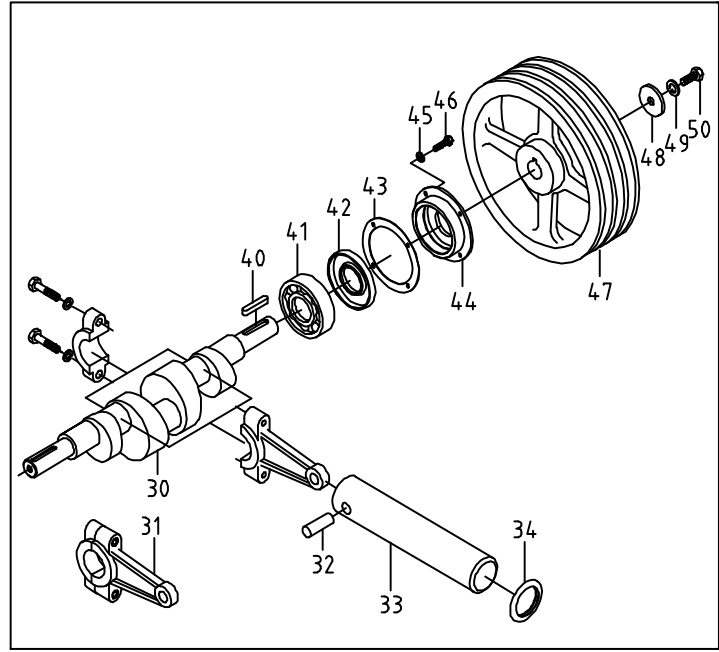
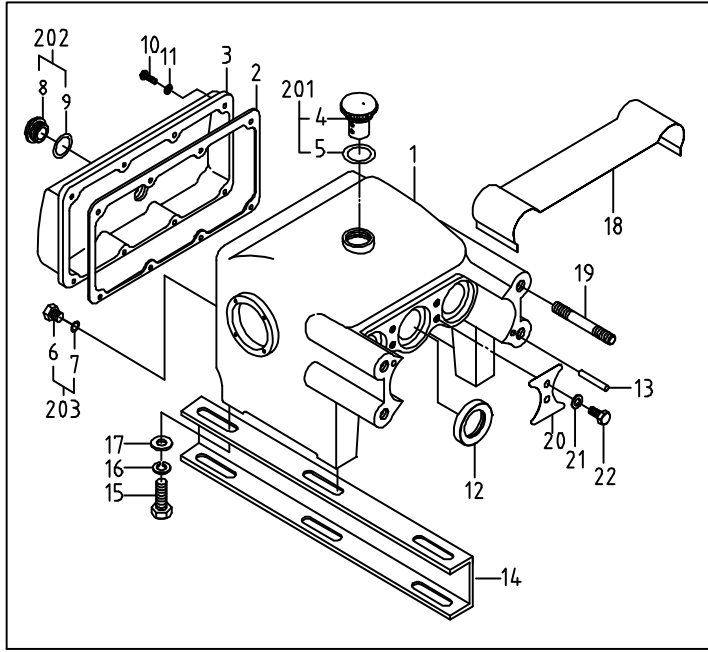
### 8. Warranty

- a. Warranty : This warranty involves any failure parts produced or supplied by manufacturer when failure part caused any abnormal performance. During warranty period, the manufacturer offer free maintenance.
  - No service charge and expense of replaced part are required with warranty.
  - Warranty period : one year after delivery.
- b. The manufacturer is not responsible for damage provokes in case of:
  - A serious lack of foreseen maintenance.
  - Damages caused by the nature disaster such as earthquake.
  - Modifications or intervention that are not authorized by the manufacturer.
  - Non-normative uses that contrary to the specific.
  - The use of non-original spare parts and assigned oil for the pump.
  - Natural aging situation such as rust on surface caused by time.
  - Not inquire to factory or your local distributor when damage occurs.
  - The performance is still good base on power sprayer's registered spec. even some noise or vibration show up.
  - Using the pump without following the instructions of this manual.
- c. The manufacturer is not responsible for expense provoked in case of:
  - Losing of failure parts during warranty application.
  - Any direct and/or indirect lose comes from warranty items.
  - Regarding to warranty, all seals, packing, O-rings and oil are excluded.



**TANONG PRECISION TECHNOLOGY CO., LTD.**

No.6, Fengming Rd., Daya Dist., Taichung City  
428, Taiwan (R.O.C.)  
Tel : +886-4-25662106  
Fax: +886-4-25662109  
web:www.tanong.com.tw  
E-mail: info@tanong.com.tw



Pos.	Parts No.	Parts Name	Q'ty	Specification
1	010-2400-240	Crank case	1	
2	013-2400-000	Gasket, crank case	1	
3	011-2400-240	Cover, crank Case	1	
4	014-2400-001	Oil Cap	1	
5	120-3440-000	O-Ring	1	34x3
6	017-2400-271	Plug, Fuel Drain	1	M12x1.5P
7	120-1015-000	O-Ring	1	10x2.5
8	015-2200-001	Oil Gauge	1	
9	125-2535-000	Gasket	1	
10	142-0600-005	Screw	8	6x20
11	144-0104-001	Washer, Spring	8	1/4"
12	130-2400-000	Oil Seal, plunger	3	55x78x13
13	012-1300-000	Pin	2	
14	018-2400-270	Bed, crank case	1	
14A	018-2400-271	Bed, crank case	1	
15	140-1400-001	Bolt	4	14x30
16	144-1400-001	Washer, Spring	4	M14
17	145-1400-001	Washer	4	14x34
18	016-2400-270	Plunger Cover	1	
19	141-1600-001	Stud Bolt	4	16x72
20	019-1300-000	Stop slice, Oil Seal	2	
21	144-0600-001	Washer, Spring	4	M6
22	140-0600-001	Bolt	4	6x10
30	020-2400-220	Crank Shaft	1	
31	021-2400-210	Connecting Rod	3	
32	023-2400-000	Plunger Pin	3	
33	022-2400-002	Plunger	3	Standard type
	022-3240-000	Plunger, chrome plated	3	Optional
34	027-2400-000	Stopping Ring, Water	3	
40	025-2400-000	Key	1	10x8x30
41	024-2400-003	Bearing	2	
42	131-2401-000	Oil Seal, Crank Shaft	2	TS-240
43	013-2401-902	Gasket, Cover	2	
44	026-2400-220	Cover, Oil Seal	2	026-2400-230
45	144-0516-001	Washer, Spring	8	M8
46	140-0800-025	Bolt	8	M8x20
47	A04-14B3-231	Pulley	1	
48	145-2400-000	Washer	1	
49	144-1200-001	Washer, Spring	1	M12
50	140-1200-009	Bolt	1	12x35
56	044-2400-000	Grand	3	
57	041-2400-000	Grease Packing	3	
58	042-2400-000	Grease Ring	3	
59	043-2400-001	V-Packing	9	
59	043-2400-001	V-Packing	6	
60	045-2400-000	V-Packing Seat	3	
61	040-2400-210	Cylinder	1	
62	046-2400-000	Grease Cup	3	
63	047-2400-000	Stopper, Grand	2	
66	140-0800-001	Bolt	2	8x16
67	144-1600-001	Washer, Spring	4	M16
69	146-1600-001	Nut	4	M16
70	030-2400-210	Suction&Discharge Metal	1	
73	140-1200-005	Bolt	8	12x80
74	144-1200-001	Washer, Spring	8	M12
78	080-2400-000	Valve Ass'y	6	
79	081-2400-000	Box, Valve	6	
80	086-2400-000	Spring, Valve	6	

Pos.	Parts No.	Parts Name	Q'ty	Specification
81	082-2400-000	Flat, Valve	6	
82	083-2400-000	Seat, Valve	6	
83	084-2400-000	Ring, Valve	6	
84	085-2400-000	Seal, Valve	6	
93	052-2400-250	Air Chamber	1	TS-240
94A	055-2400-300	Pressure Gauge	1	2 1/2"
95	123-1250-000	Packing	1	
96	056-1250-000	Washer	1	
97	057-1250-000	Coupling	1	1 1/2"
98	051-1250-000	Cock	2	
110A	126-2000-000	Packing	1	
110B	120-3945-000	O-Ring	1	39x3
111	031-2400-230	Core, coupling	1	2"
112	057-2400-000	Coupling	1	2"
113	034-0241-000	Turn-Buckle	1	2 1/4"
114	032-2400-260	Core, Strainer	1	2"
115	A03-S016-090	Suction Hose	1	1 3/4"x 9
116	033-8000-000	Strainer Ass'y	1	
122	074-2400-200	Lever	1	
123	074-2400-003	Plastic Ball	1	
124	070-2400-200	Spring Box	1	
125	076-2400-000	Upper Metal	1	
126	078-2400-000	Spring	1	
127	077-2400-000	Under Metal	1	
128	140-1000-004	Bolt	2	10x40
129	144-1000-002	Washer, Spring	2	M10
130	145-1000-001	Washer	2	M10
131	074-2400-004	Bolt	2	12x27
132	074-2400-005	Wave Washer	2	
134	075-2400-000	Spindle, Roller	1	
135	075-2400-002	Washer	2	
137	075-2400-001	E Washer	2	
138	124-2400-000	Packing	1	
140	062-2400-000	Oil Seal	1	
141	063-2400-000	Box, oil seal	1	
142	933-2400-000	Spindle&Valve, OverFlow	1	
144	060-2400-210	Body Over Flow	1	
145	120-3945-000	O-Ring	1	39x3
146	068-2400-250	Valve Seat	1	
147	069-2400-210	Body Over Flow Seat	1	
148	145-1000-001	Washer	4	M10
149	144-1000-002	Washer, Spring	4	M10
150	140-1000-005	Bolt	2	10x45
160	126-1140-000	Packing	1	1 1/4"
161	031-8000-260	Core, coupling	1	1 1/4"
162	057-8000-000	Coupling	1	1 1/4"
163	034-0143-000	Turn-Buckle	1	1 3/4"
164	A03-O012-090	Over Flow Hose	1	1 1/4"x9
201	923-2400-001	Oil Cap & O-Ring	1	
202	924-2200-001	Oil Gauge & Gasket	1	
203	925-2400-000	Plug, Fuel Drain & O-Ring	1	
204	934-2400-000	Screw & Fly Nut	1	
205	031-8000-002	Core, coupling & Packing	1	1 1/4"
206	031-2400-000	Core, coupling & Packing, O-Ring	1	2"
207	930-2400-000	Over Flow Ass'y	1	120-150
208	931-2400-000	Spring Box Ass'y	1	120-137
209	932-2400-000	Body Over Ass'y	1	138-150